






**NACRA 15  
EUROPEANS**

**NACRA 17<sup>U24</sup>  
WORLDS**

ROYAL BELGIAN SAILING CLUB  
JULY 2023

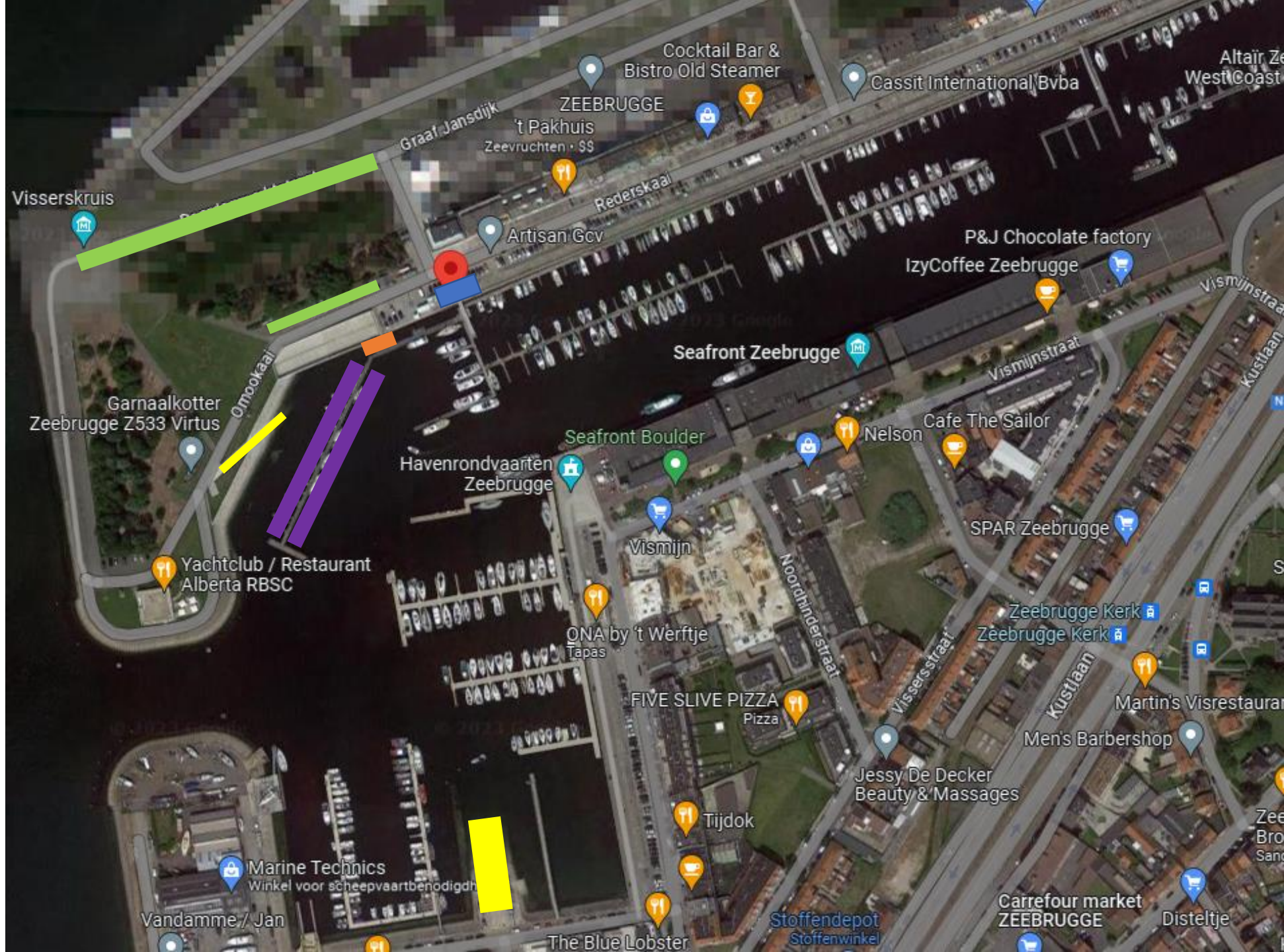
## Harbour for coach boats

Rederskaai 1  
8380 Zeebrugge

-  Harbour master office
-  Fuel Station
-  Slipway (don't use the slipway with low tide)
-  Free trailer parking
-  Coach boat berths

Please contact our harbourmaster before your first arrival  
Harbour master phone: +32 496 78 90 53

Respect the modalities for a smooth and safe passage  
through the port of Zeebrugge (Doc. Leaving & entering the  
port of Zeebrugge)



## SMOOTH AND SAFE THROUGH THE PORT OF ZEEBRUGGE

### EXPLANATION FOR PLEASURE CRAFT

The purpose of this explanatory memorandum is to inform pleasure craft about the modalities for a smooth and safe passage through the port of Zeebrugge. It is a common initiative of the harbourmaster's office of the Port of Zeebrugge and the yacht clubs RBSC and BZYC. It is subordinate to all applicable regulations, including the Port Regulation for the Port of Brugge-Zeebrugge. This Regulation and additional information may be consulted on <https://portofzeebrugge.be/nl/nautisch/e-loket>.

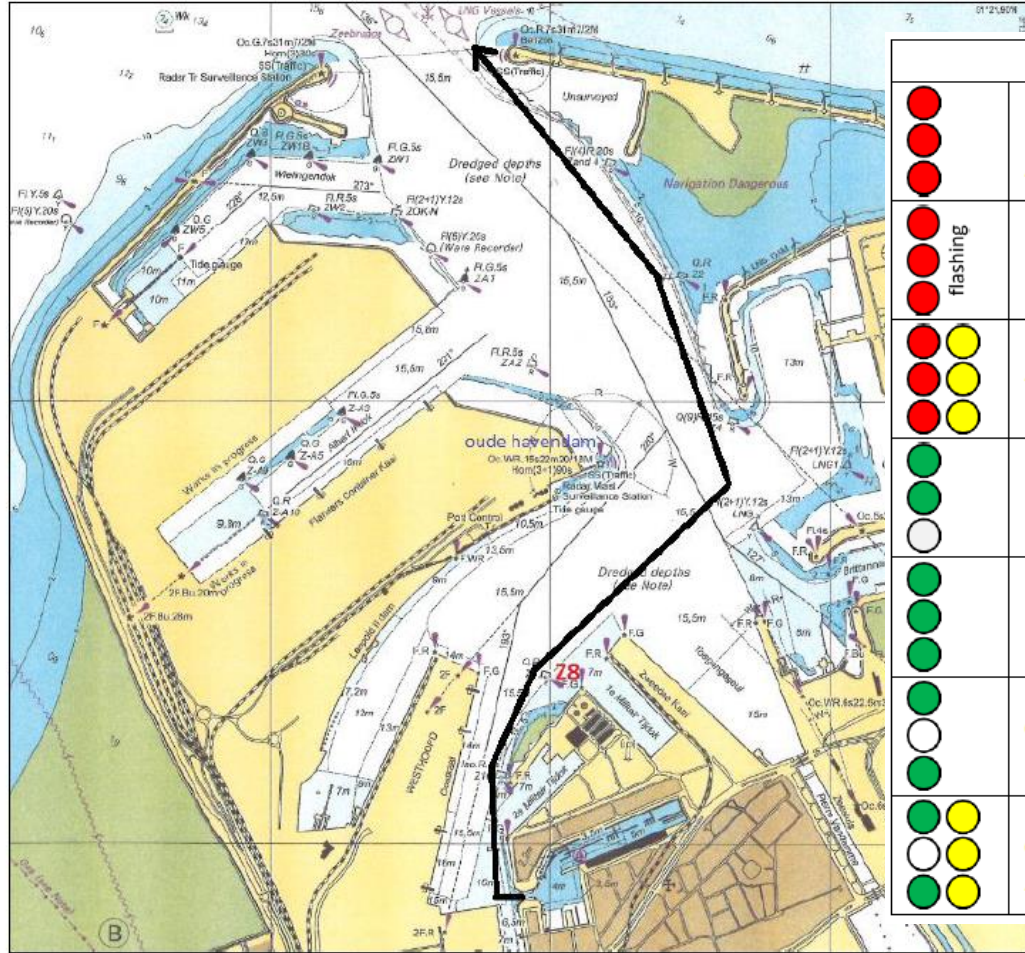
#### GENERAL

- It is expected to listen to VHF71 (Port Control) during the entire passage through the port between the seaward dams and the marina dock. Listening is best started at least 15 minutes in advance to get an idea of the traffic situation.
- If in doubt about a certain situation, Port Control Zeebrugge can always be contacted via VHF71. Port Control's instructions take precedence over the traffic signs and must be followed.
- It is not required to take contact with Port Control during the passage through the port if the rules and signals are followed correctly.
- It is mandatory to:
  - o to respect the traffic signs on the seaward dams and the old harbour dam;
  - o to keep the starboard side and cross the waterways and docks perpendicularly unless Port Control would instruct or allow it otherwise;
  - o keep a safe distance from commercial shipping.
- It is forbidden to:
  - o to hinder commercial shipping;
  - o to beat, fish or anchor in the harbour;
  - o enter the commercial and military port docks.
- The maximum permitted speed in the marina dock is 3 knots (6 km/h). In the other port area, a safe speed must be maintained, taking into account all shipping traffic and weather conditions.

## LEAVING THE PORT OF ZEEBRUGGE

When sailing out of the marina dock, permission must be obtained from Port Control Zeebrugge via VHF71. This can best be done just before or while leaving the berth. In any case, it must be done before leaving the marina dock.

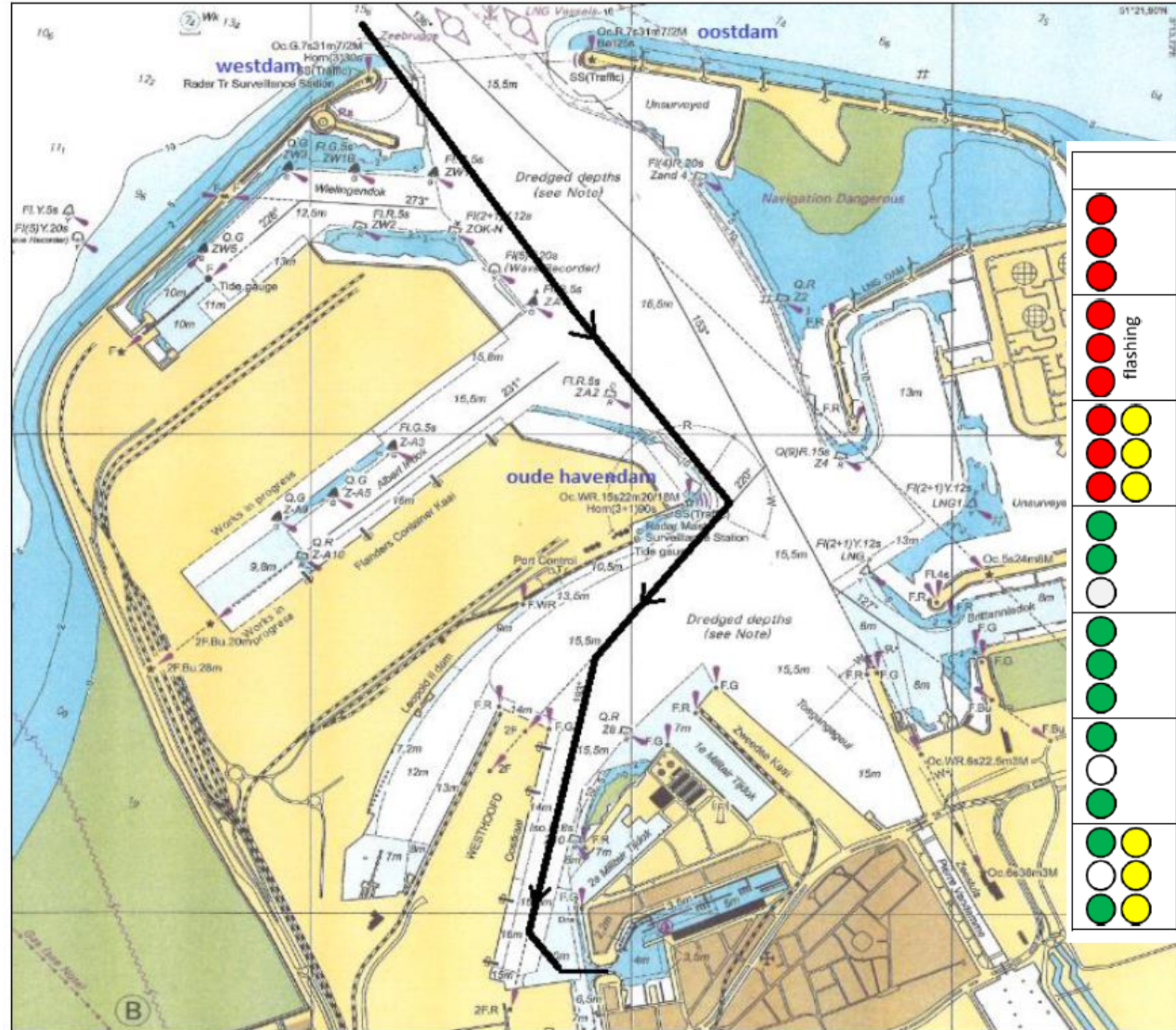
Starboard side on exit = east side = red side.



Seaward dams		Old harbour dam (oude havendam)	
● ● ●	<b>Leaving prohibited</b> <i>Wait on the east side of the waterway, north of the LNG dam</i>	● ● ●	<b>Leaving prohibited</b> <i>Wait at the red Z8 buoy</i>
● ● ● flashing	<b>Port closed, great danger</b> <i>Wait for instructions</i>		
● ● ● ● ● ●	<b>Leaving prohibited</b> <i>LNG tanker sails in or out</i>		
● ● ● ○	<b>Leaving permitted - two-way traffic</b>	● ● ○	<b>Leaving permitted - two way traffic</b>
● ● ● ● ●	<b>Leaving permitted - one-way traffic</b>		
● ○ ● ●	<b>Leaving only with the express permission of Port Control (VHF71)</b>	● ○ ●	<b>Leaving only with the express permission of Port Control (VHF71)</b>
● ○ ● ● ●	<b>Leaving only with the express permission of Port Control (VHF71)</b> <i>LNG tanker sails in or out</i>		

# ENTERING THE PORT OF ZEEBRUGGE

Starboard side on entry = west side = green side.



Seaward dams		Old harbour dam (oude havendam)	
●●●●	<b>Entry prohibited</b> <i>Wait outside the waterway</i>	●●●	<b>Entry prohibited</b> <i>Wait on the west side of the waterway, north of the old harbour dam</i>
●●●● flashing	<b>Port closed, great danger</b> <i>Wait for instructions</i>		
●●●●●	<b>Entry prohibited</b> <i>LNG tanker sails in or out</i>		
●●●●●	<b>Entry permitted - two-way traffic</b>	●●●●●	<b>Entry permitted – two way traffic</b>
●●●●●	<b>Entry permitted - one-way traffic</b>	●●●●●	
●●●●●	<b>Entry only with the express permission of Port Control (VHF71)</b>	●●●●●	<b>Entry only with the express permission of Port Control (VHF71)</b>
●●●●●	<b>Entry only with the express permission of Port Control (VHF71)</b> <i>LNG tanker sails in or out</i>		