



# SAILING INSTRUCTIONS

## Nacra 15 Class Event 2017

### European and African Youth Olympic Qualifier

Organized by KZ&RV Hollandia in conjunction with  
the International Nacra 15 Class Association

from 22 to 27 October (inclusive) 2017

Location: IJsselmeer, off Medemblik, the Netherlands

---

[NP] denotes that a breach of this rule will not be grounds for a protest by a boat.

[SP] denotes a rule for which a standard penalty may be applied by the race committee without a hearing

## 1. RULES

- 1.1 The regatta will be governed by the rules as defined in *The Racing Rules of Sailing (RRS)*.
- 1.2 Nacra 15 Class Rules will apply.
- 1.3 The Royal Netherlands Yachting Union (RNYU) prescriptions that will apply are stated in full in [http://www.sailing.org/documents/racingrules/national\\_prescriptions.php](http://www.sailing.org/documents/racingrules/national_prescriptions.php)
- 1.4 RRS Appendix T, Arbitration, will apply.
- 1.5 If there is a conflict between languages the text in the original language will take precedence.



## 2. NOTICES TO COMPETITORS

Notices to competitors will be posted on the official notice board(s) located at the Regatta Center Medemblik.

## 3. CHANGES TO SAILING INSTRUCTIONS

Any change to the sailing instructions will be posted before 09:00 on the day it will take effect, except that any change to the schedule of races will be posted by 20:00 on the day before it will take effect.

## 4. SIGNALS MADE ASHORE

- 4.1 Signals made ashore will be displayed at flagpoles in front of the race office.
- 4.2 When flag AP  is displayed ashore, '1 minute' is replaced with 'not less than 30 minutes' in the race signal AP.
- 4.3 Flag D  displayed ashore with one sound signal means: "the warning signal will be made not less than 30 minutes after flag D is displayed. Boats shall not leave the boat park until this signal is made". [DP]

## 5 SCHEDULE OF RACES

### 5.1 Dates of racing:


<i>Date</i>	<i>Nacra 15 Class</i>	<i>1<sup>st</sup> Warning signal</i>
23 October	practice race	14:00
24 October	racing 4 races back to back	11:30
25 October	racing 4 races back to back	11:30
26 October	racing 4 races back to back	11:30
27 October	racing 4 races back to back	11:30

5.2 The scheduled time of the warning signal for the first race each day is 11:30 hour. The scheduled time of the warning signal of the practice race is 14:00 hour.

5.3 To alert boats that a race or sequence of races will begin soon, the orange starting line flag on the race committee signal vessel will be displayed with one sound at least five minutes before a warning signal is made.

5.4 On the last scheduled day of racing no warning signal will be made after 15:00 hours, except after a general recall.

## 6 CLASS FLAG

The Class flag will be Flag E .

## 7 RACING AREA

Attachment A shows the location of the racing area.

## 8 THE COURSES

8.1 The diagram in Attachment B shows the course, including the approximate angles between legs, the order in which marks are to be passed, and the side on which each mark is to be left.

8.2 No later than the warning signal, the race committee signal vessel will display the approximate compass bearing of the first leg.

8.3 Courses will not be shortened. This changes RRS 32.

## 9 MARKS

9.1 Marks 1, 1A, 2S and 2P will be yellow cylindrical buoys.

9.2 The starting and finishing marks will be the race committee signal vessel and a dan buoy.

9.3 A race committee vessel signalling a change of a leg of the course is a mark as provided in SI 12.2.

## 10 Spare

## 11 THE START

- 11.1 Races will be started by using RRS 26 with the warning signal made five (5) minutes before the starting signal.
- 11.2 The starting line will be between staffs displaying orange flags on the starting marks.
- 11.3 Boats whose warning signal has not been made shall avoid the starting area during the starting sequence for other races.
- 11.4 A boat that does not start within four (4) minutes after her starting signal will be scored Did Not Start without a hearing. This changes RRS A4 and A5 .

## 12 CHANGE OF THE NEXT LEG OF THE COURSE

- 12.1 To change the next leg of the course, the race committee will move the original mark (or the finishing line) to a new position.
- 12.2 Except at a gate, boats shall pass between the race committee vessel signalling the change of the next leg and the nearby mark, leaving the mark to port and the race committee vessel to starboard. This changes RRS 28.1.

## 13 THE FINISH

The finishing line will be between staffs displaying orange flags on the finishing marks.

## 14 PENALTY SYSTEM

- 14.1 Appendix P will apply as changed by SI 14.2.
- 14.2 RRS 44.1 and RRS P2.1 are changed so that the Two-Turns Penalty is replaced by the One-Turn Penalty.
- 14.3 If the jury is on the water jury members will protest if they observe a break of a rule if the parties concerned are not taking a penalty or protest boats concerned.

## 15 TIME LIMITS AND TARGET TIME

- 15.1 Time limits are as follows (in minutes):

Time limit	Mark 1 time limit	target time
<u>  60  </u>	<u>  20  </u>	<u>  35  </u>

If no boat has passed Mark 1 within the Mark 1 time limit the race will be abandoned.

- 15.2** Failure to meet the target time will not be grounds for redress. This changes RRS 62.1(a).
- 15.3** Boats failing to finish within 15 minutes after the first boat sails the course and finishes will be scored Did Not Finish without a hearing. This changes RRS 35, A4 and A5.

## **16 PROTESTS AND REQUESTS FOR REDRESS**

- 16.1** Protest forms are available at the race office located at the Regatta Center Medemblik. Protests and requests for redress or reopening shall be delivered there within the appropriate time limit.
- 16.2** The protest time limit is 60 minutes after the last boat has finished the last race of the day or the race committee signals no more racing today, whichever is later.
- 16.3** Notices will be posted no later than 30 minutes after the protest time limit to inform competitors of hearings in which they are parties or named as witnesses. Hearings will be held in the jury room, located at the Regatta Center Medemblik, beginning at the time posted.
- 16.4** Notices of protests by the race committee, technical committee or jury will be posted to inform boats under RRS 61.1(b).
- 16.5** A list of boats that, under SI 14.1, have been penalized for breaking RRS 42 will be posted.
- 16.6** Breaches of SIs 11.3, 18, 21, 23 and 25 will not be grounds for protest by a boat. This changes RRS 60.1(a).
- 16.7** On the last scheduled day of racing a request for redress from a jury decision shall be delivered no later than 30 minutes after the decision was posted. This changes RRS 62.2.
- 16.8** A request for a decision in writing has to be delivered within one hour after the decision is given verbally. This changes RRS 65.2 .
- 16.9** A request for correction of an error in the published results has to be delivered within the protest time limit of the last scheduled day of racing or within 60 minutes after posting of the results, whichever is later. When the request is not granted, the protest time limit is 60 minutes after the boat is informed that the request is not granted. This changes RRS 62.2 .
- 16.10** An international jury is appointed. Decisions of the international jury will be final as provided in RRS 70.5.

## **17 SCORING**

- 17.1** Four races are required to be completed to constitute a series.
- 17.2**
  - (a) When fewer than five (5) races have been completed, a boat's series score will be the total of her race scores.
  - (b) When five (5) to nine (9) races have been completed, a boat's series score will be the total of her race scores excluding her worst score.
  - (c) When ten (10) or more races have been completed, a boat's series score will be the total of her race scores excluding her two worst scores

- 17.3** For boats eligible for the Youth Olympic Qualifier event (athletes must be born between 1 January 2000 and 31 December 2003), the qualifying countries will be based on the result of the registered mixed teams (born between 1 January 2000 and 31 December 2003) with the overall results.

## **18 SAFETY REGULATIONS [DP] [NP]**

- 18.1** Check-out and check-in: all teams have to check out before leaving the boat park and check-in directly (within 30 minutes) after arriving back at the boat park.
- 18.2** A boat that retires from a race shall notify the race committee as soon as possible.
- 18.3** Competitors shall wear personal flotation devices at all times while afloat.
- 18.4** When the Race Committee displays flag V with repetitive sounds, all official and support boats shall give assistance for rescue.

## **19 REPLACEMENT OF CREW OR EQUIPMENT**

- 19.1** Substitution of competitors will not be allowed without prior written approval of the Technical Committee.
- 19.2** Substitution of damaged or lost checked and hallmarked equipment by not-checked equipment will not be allowed unless approved by the Technical Committee. Requests for substitution shall be made to the committee at the first reasonable opportunity.

## **20 EQUIPMENT AND MEASUREMENT CHECKS**

- 20.1** All boats must be checked before the first official race.  
Equipment inspection:
- 22 October (Sunday) 09:00 – 18:00 hours
  - 23 October (Monday) 09:00 – 18:00 hours
- 20.2** On the water, a boat can be instructed by the race committee or of the technical committee to proceed immediately to a designated area for inspection. Ashore, equipment may be inspected or measured at any time.

## **21 EVENT ADVERTISING [NP][DP]**

Boats shall display advertising supplied by the organizing authority.

## **22 OFFICIAL BOATS**

Official boats will be marked as follows:

- The race committee signal vessel will display RC on a white background.
- The race committee ribs will display 'Rescue' on the tubes.
- Jury boats will fly a yellow flag with 'Jury'.

## **23 SUPPORT BOATS [NP][DP]**

- 23.1** Team leaders, coaches and other support personnel shall stay outside areas where boats are racing from the time of the preparatory signal until all boats have finished or retired or the race committee signals a postponement, general recall or abandonment.
- 23.2** Support boats shall be marked with their national flag or country letters.

## **24 TRASH DISPOSAL**

Trash may be placed aboard support or official boats.

## **25 RADIO COMMUNICATION [NP][DP]**

Except in an emergency, a boat that is racing shall not make voice or data transmissions and shall not receive voice or data communication that is not available to all boats.

## **26 PRIZES**

- 26.1** Prizes will be awarded to the helms man and crew of the first three (3) boats in the overall open score.
- 26.2** Extra prizes will be awarded to the best junior open team (under 19) and the best junior mixed team (under 19).

## **27 DISCLAIMER OF LIABILITY**

Competitors participate in the regatta entirely at their own risk. See RRS 4, Decision to Race. The organizing authority will not accept any liability for material damage or personal injury or death sustained in conjunction with or prior to, during, or after the regatta.

## **28 RIGHTS TO USE NAME AND LIKENESS**

By participating in this event, competitors automatically grant to the organizing authority and the event sponsors the right, in perpetuity, to make, use, and show, at their discretion, any photography, audio and video recordings, and other reproductions of them made at the venue or on the water from the time of their arrival at the venue, until their final departure, without compensation.

## **29 INSURANCE**

Each participating boat shall be insured with valid third-party liability insurance with a minimum cover of Euro 1.500.000 per incident or the equivalent.

## **30 ORGANISATION**

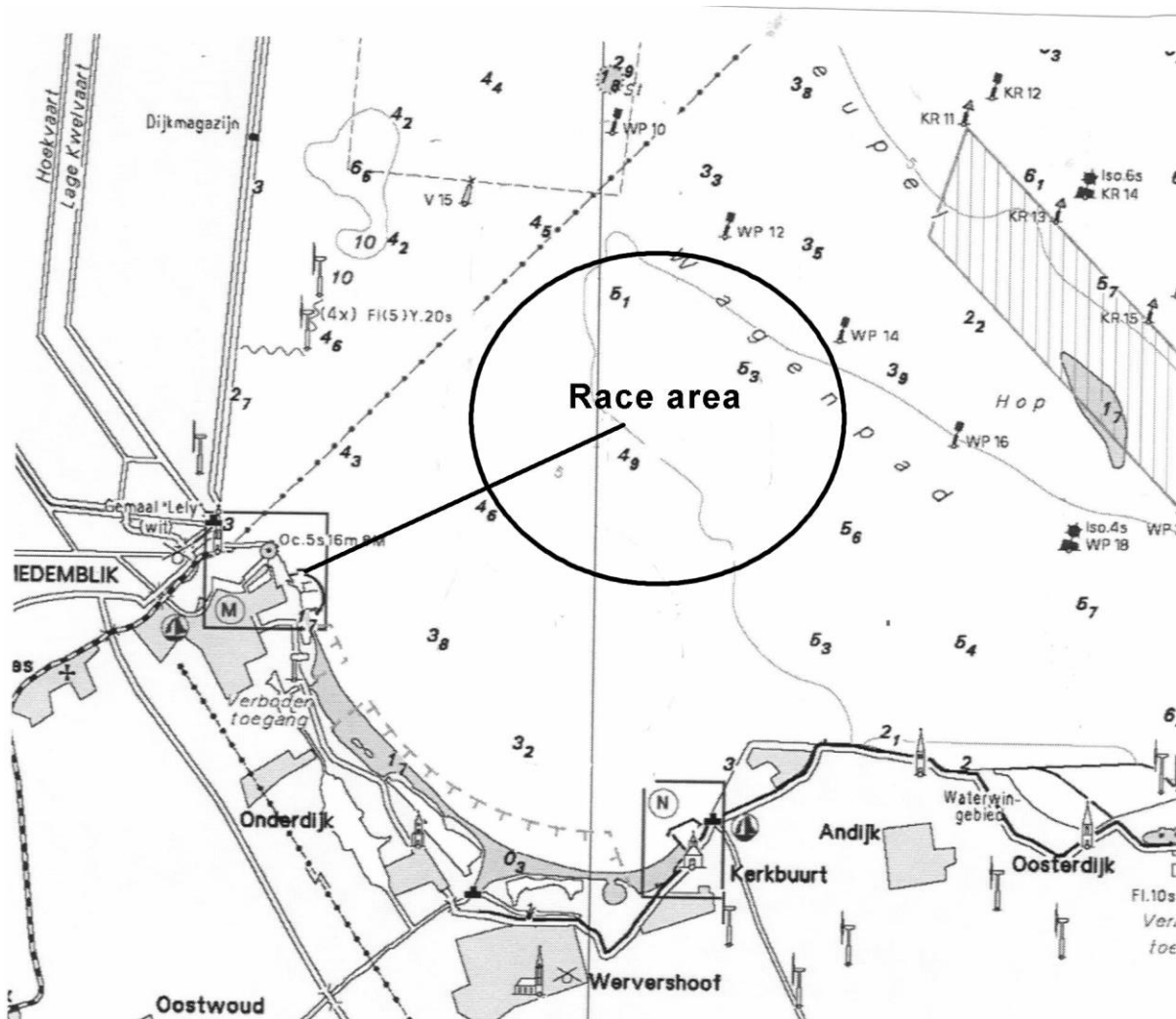
The race officer is: John Borsboom (NED)  
The chairman of the jury is: Leo Vekemans (BEL)  
The by the OA appointed technical committee is: Leo Sanchez (ESP)

### APPROXIMATE POSITION RACE AREA

Harbor (Regatta Center) – Racing Area (mid point)

Distance: approx. 2,0 NM

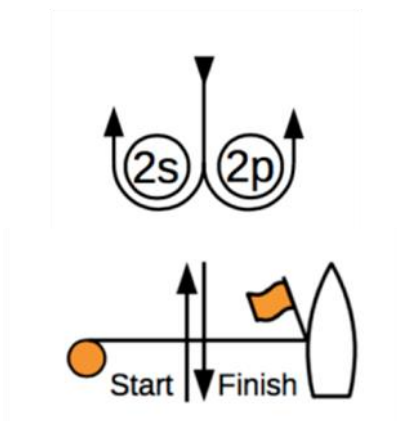
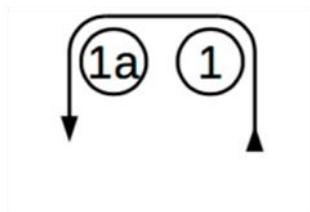
Compass bearing: approx. 060°



**ATTACHMENT B**

**ILLUSTRATING THE COURSE**

**A Windward-Leeward course**



**Start – 1 – 1a – 2s/2p – 1 – 1a – Finish**